

REDUCING HEALTH HAZARDS OF LIVING IN BAMBOO RELIEF SHELTERS

AIR

POOR
VENTILATION

HIGH
HUMIDITY

DUST AND
SMOKE



SURFACE

INFESTATION

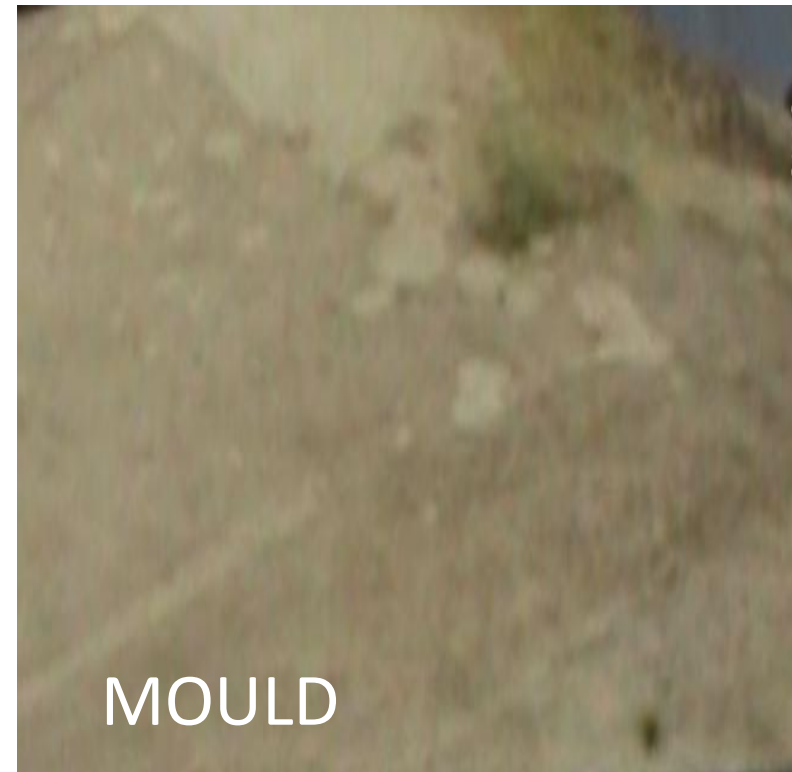
HYGIENE

FIRE

Bangladesh bamboo shelter 2018



Nepal tent roof 2008



High humidity (bacteria, fungi and viruses can survive on hard surfaces)

Pneumoconiosis (Hut lung)

Allergies (Farmer's lung)

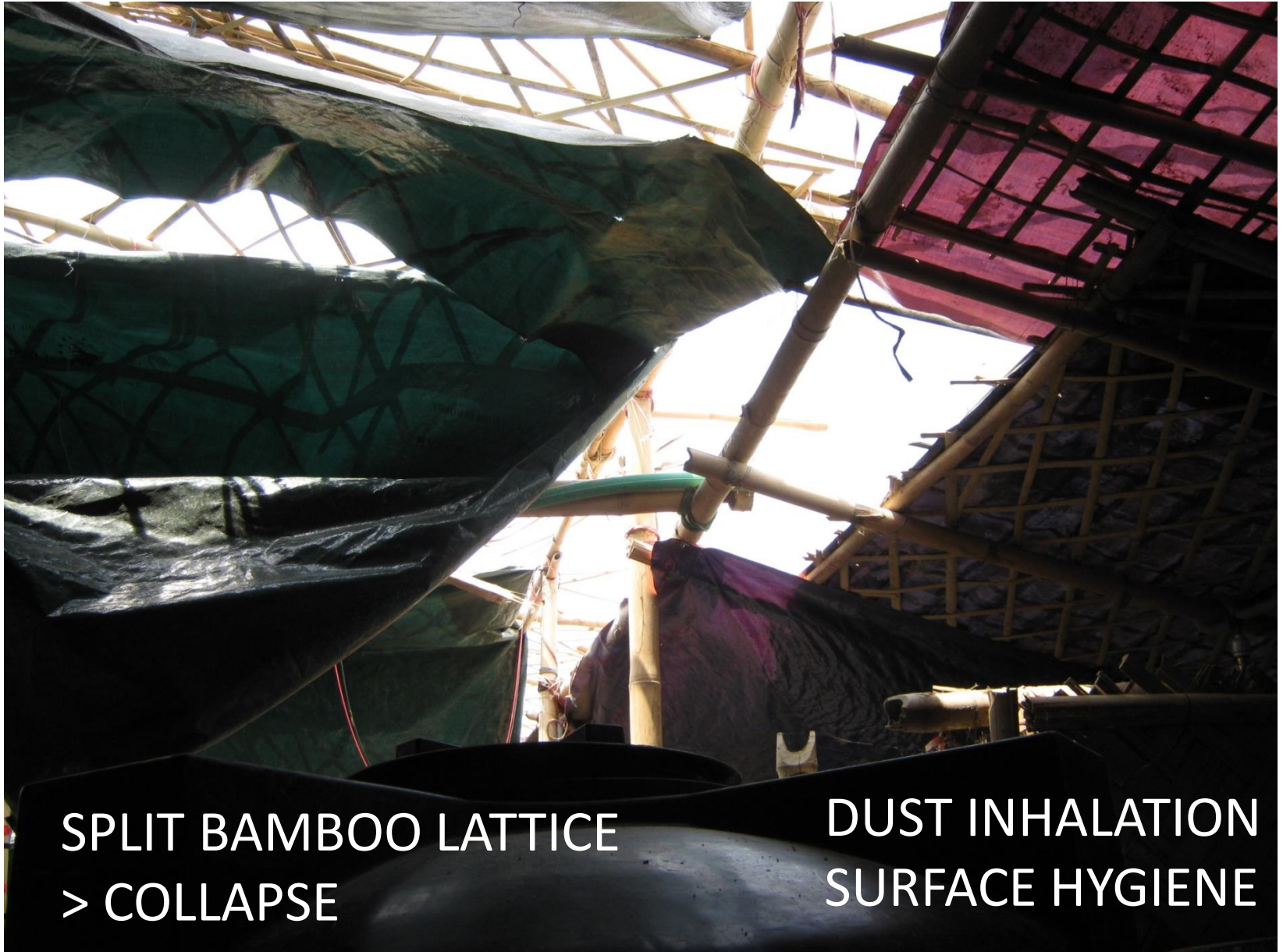
Asthma

Bangladesh 2018

ATTEMPTS AT INSULATION

increased infestation
increased fire hazard

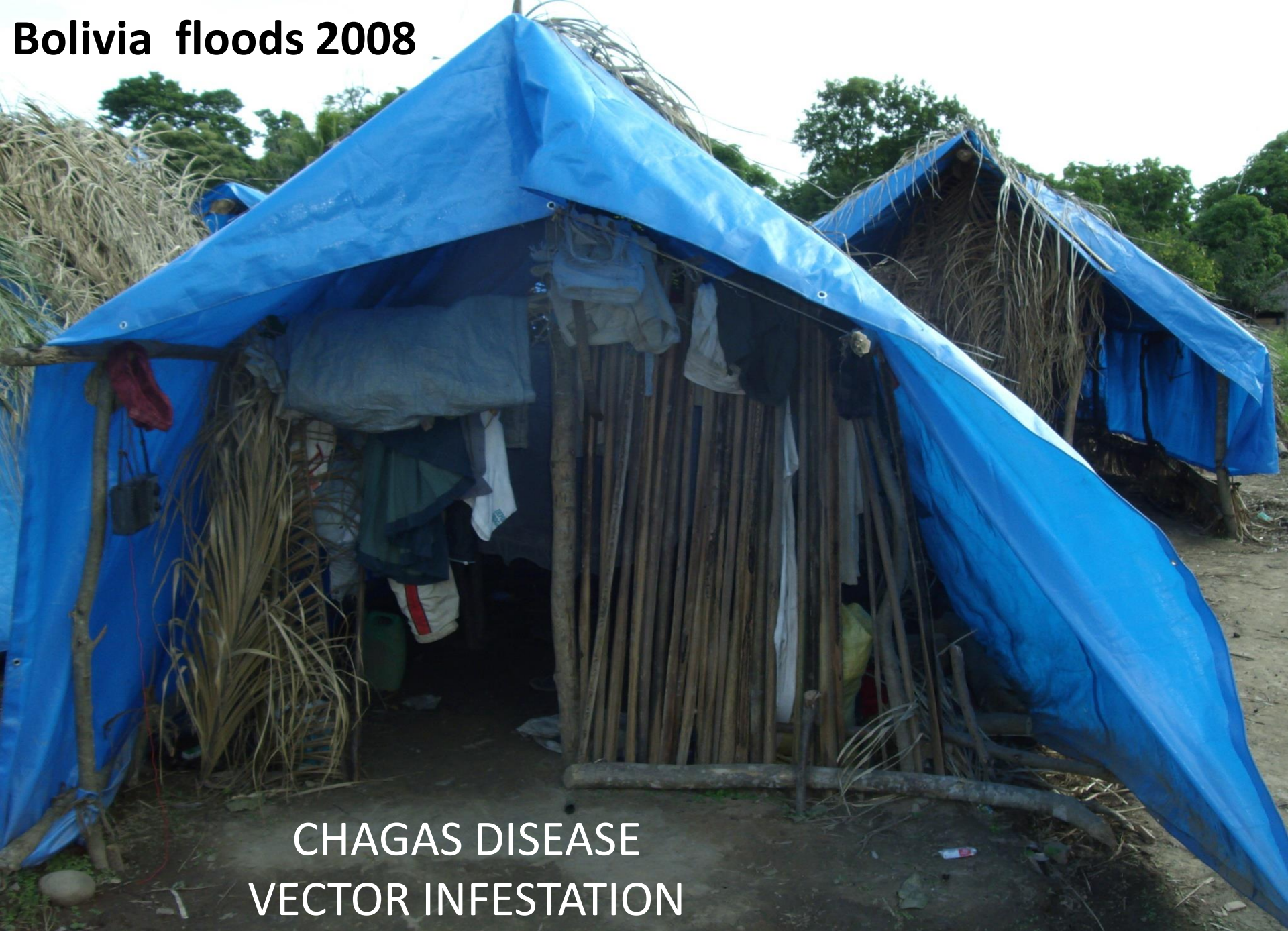




SPLIT BAMBOO LATTICE
> COLLAPSE

DUST INHALATION
SURFACE HYGIENE

Bolivia floods 2008



CHAGAS DISEASE VECTOR INFESTATION

A new type of shelter roof: the reciprocal frame roof “panel”

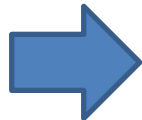


an exceptionally strong frame
capable of supporting insulation

Reciprocal frame Shelter Kit (RSK)



IMPROVED
ventilation
insulation
surface hygiene



HEALTHIER
living



PERSONALISATION
empowering
improving morale and
psychological health

Inside the RSK shelter



No split bamboo

reduced infestation
reduced dust
reduced fire hazard



Key to better health

✓ improved ventilation

“ Acute respiratory infection has remained the **primary cause of death** for the camp population living in Cox’s Bazar (28%) and for children under 5 years of age (38%) “

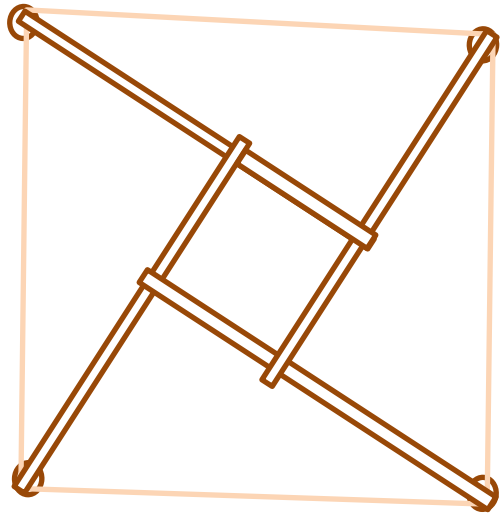
World Health Organisation 2017



Hypothermia

Insulation roof
and walls

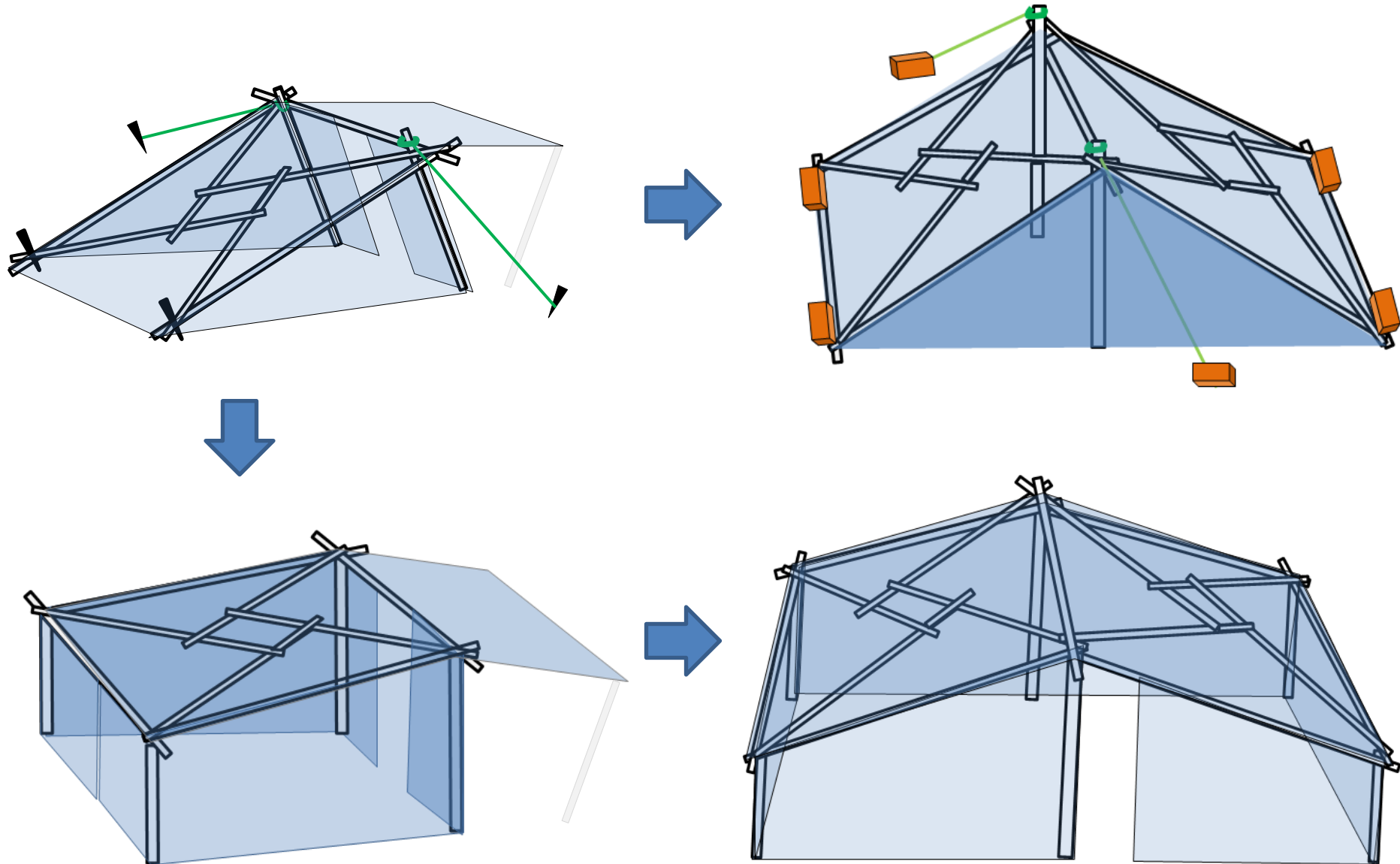
Ground insulation :
raised platform for
children / the infirm



Earthquake emergency RSK shelter
freestanding on concrete

Psychological health
Security / after shocks

RSK shelter : upgradeable health benefits



Thank you

www.RSKshelter.org

